

FSPC ..10

zone 1

zone 2



EEx d IIC

IIGD

IP 66



zone 21

zone 22

EN 50014



special T amb.



special T amb.



INTERRUTTORI - SWITCHES

T5

T4

T3

EN 50281-1-1

KEMA 01ATEX2244

T 95°C

T 130°C

T 195°C

Caratteristiche : Interruttori semirotativi a cammes con comando frontale

Features : Cam rotary switches with frontal drive

Materiali : Lega leggera

Materials : Light alloy (aluminium)

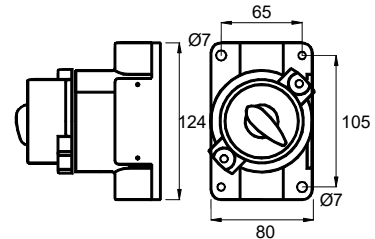
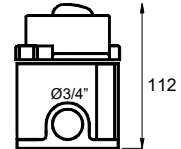
A richiesta Viti di acciaio inox - guarnizioni al silicone

Optional Stainless screws - silicon gaskets

Codice Code	N° Poli Poles N°	Corrente Current
FSPC 210	2	16A
FSPC 310	3	16A
FSPC 410	4	16A



FSPC ..10 lucchettabile
Aggiungere al codice il suffisso L
padlocking FSPC ..10
Add to code the suffix L



FSPC ..25

zone 1

zone 2



EEx d IIC

IIGD

IP 66



zone 21

zone 22

EN 50014



special T amb.



special T amb.



INTERRUTTORI - SWITCHES

T5

T4

T3

EN 50281-1-1

KEMA 01ATEX2246

T 95°C

T 130°C

T 195°C

Caratteristiche : Interruttori semirotativi a cammes con comando frontale

Features : Cam rotary switches with frontal drive

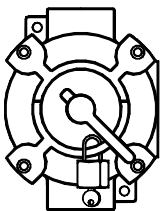
Materiali : Lega leggera

Materials : Light alloy (aluminium)

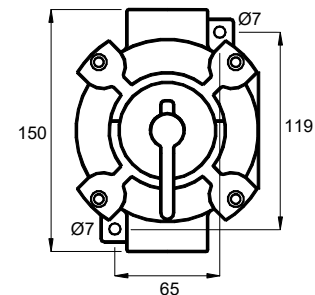
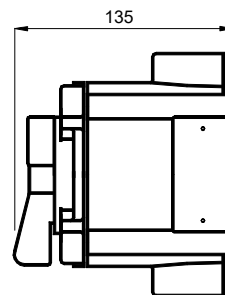
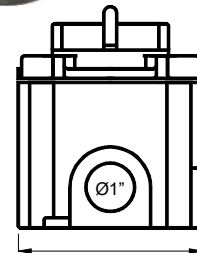
A richiesta Viti di acciaio inox - guarnizioni al silicone

Optional Stainless screws - silicon gaskets

Codice Code	N° Poli Poles N°	Corrente Current
FSPC 325	3	32A
FSPC 425	4	32A
FSPC 625	6	32A
FSPC 825	8	32A



FSPC ..25 lucchettabile
Aggiungere al codice il suffisso L
padlocking FSPC ..25
Add to code the suffix L





zone 1	zone 2
zone 21	zone 22
EN 50014	
T5	T4
EN 50281-1-1	
T 95°C	T 130°C
T 195°C	



EEx d IIC	II2GD	IP 66	-20°C
			+40°C special T amb.
			-50°C special T amb
			+80°C

SELETTORI - SWITCHES

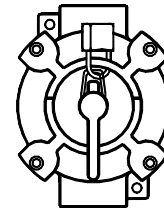
KEMA 01ATEX2244



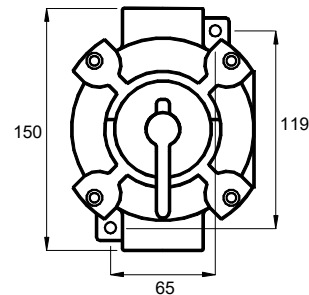
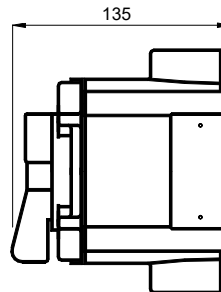
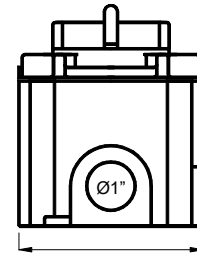
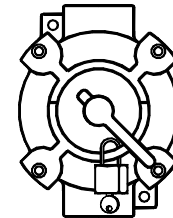
- Caratteristiche : Selettori
- Features : Selectors
- Materiali : Lega leggera
- Materials : Light alloy (aluminium)
- A richiesta Viti di acciaio inox - guarnizioni al silicone
- Optional Stainless screws - silicon gaskets

SEL Z				<table border="1"> <tr><td></td><td>1</td><td>2</td><td></td><td></td></tr> <tr><td>11-12</td><td>X</td><td>O</td><td></td><td></td></tr> <tr><td>12-14</td><td>O</td><td>X</td><td></td><td></td></tr> <tr><td>21-22</td><td>X</td><td>O</td><td></td><td></td></tr> <tr><td>22-24</td><td>O</td><td>X</td><td></td><td></td></tr> </table>		1	2			11-12	X	O			12-14	O	X			21-22	X	O			22-24	O	X		
	1	2																											
11-12	X	O																											
12-14	O	X																											
21-22	X	O																											
22-24	O	X																											
SEL W				<table border="1"> <tr><td></td><td>1</td><td>0</td><td>2</td><td></td></tr> <tr><td>11-12</td><td>X</td><td>O</td><td>O</td><td></td></tr> <tr><td>12-14</td><td>O</td><td>O</td><td>X</td><td></td></tr> <tr><td>21-22</td><td>X</td><td>O</td><td>O</td><td></td></tr> <tr><td>22-24</td><td>O</td><td>O</td><td>X</td><td></td></tr> </table>		1	0	2		11-12	X	O	O		12-14	O	O	X		21-22	X	O	O		22-24	O	O	X	
	1	0	2																										
11-12	X	O	O																										
12-14	O	O	X																										
21-22	X	O	O																										
22-24	O	O	X																										
SEL R				<table border="1"> <tr><td></td><td>0</td><td>1</td><td></td><td></td></tr> <tr><td>13-14</td><td>O</td><td>O</td><td>X</td><td></td></tr> <tr><td>21-22</td><td>O</td><td>X</td><td>X</td><td></td></tr> </table>		0	1			13-14	O	O	X		21-22	O	X	X											
	0	1																											
13-14	O	O	X																										
21-22	O	X	X																										
SEL X				<table border="1"> <tr><td></td><td>0</td><td>1</td><td></td><td></td></tr> <tr><td>13-14</td><td>O</td><td>O</td><td>X</td><td></td></tr> <tr><td>21-22</td><td>O</td><td>X</td><td>X</td><td></td></tr> </table>		0	1			13-14	O	O	X		21-22	O	X	X											
	0	1																											
13-14	O	O	X																										
21-22	O	X	X																										
SEL Y				<table border="1"> <tr><td></td><td>1</td><td>0</td><td>2</td><td></td></tr> <tr><td>13-14</td><td>X</td><td>O</td><td>O</td><td>O</td></tr> <tr><td>23-24</td><td>X</td><td>X</td><td>O</td><td>O</td></tr> <tr><td>33-34</td><td>O</td><td>O</td><td>O</td><td>X</td></tr> <tr><td>43-44</td><td>O</td><td>O</td><td>X</td><td>X</td></tr> </table>		1	0	2		13-14	X	O	O	O	23-24	X	X	O	O	33-34	O	O	O	X	43-44	O	O	X	X
	1	0	2																										
13-14	X	O	O	O																									
23-24	X	X	O	O																									
33-34	O	O	O	X																									
43-44	O	O	X	X																									

Elemento a tre posizioni lucchettabile
 Aggiungere al codice il suffisso L
 Three position padlocking element
 Add to code the suffix L



Elemento a due posizioni lucchettabile
 Aggiungere al codice il suffisso L
 Two position padlocking element
 Add to code the suffix L



Simboli schema elettrico e funzionale
Electrical and arrangement symbols

- Ritorno a molla
Spring return
- Comando rotativo
Rotary command
- Dispositivo di blocco a richiesta
Locking device upon request
- Contatto aperto
Opened contact
- Contatto chiuso
Closed contact
- Contatto senza interruzione
Contact without interruption

Caratteristiche elementi di contatto	Electrical contacts characteristics
Comando con sistema a scatto Pacchi isolanti in melamina Elementi di contatto dorati lamellari di tipo strisciante ed autopulente Corrente nominale : 10A Morsetti : a vite con serrafilo 1,5 mm ²	Trip system control assembly Melanine insulated bodies Self cleaning and self sliding golden plate lamellar contacts Rated current : 10A Terminals : On screw with plate clamp 1,5 mm ²